



# PREMIUM POWER P R O D U C T S

## 5th Generation Internal Battery *For iPod®*

The instructions below come with no warranty or guarantee. Improper assembly or use of excessive force may result in damage to your iPod®. The buyer assumes full responsibility for damages or problems caused by use of these instructions. Installing this battery requires a moderate level of technical ability and proficiency in the use of hand tools as well as a general understanding of electronic components.



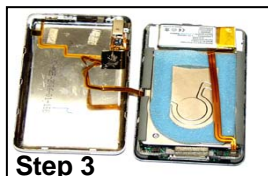
### Step 1

Before starting you will need to power off the iPod. The picture to the left shows the locations for the 17 clips that you will need to release.



### Step 2

Start by wedging the included flathead screwdriver between the plastic front cover and back aluminum casing. Using a shoveling motion, begin to release the clips along the side of the iPod and work your way to the other side.



### Step 3

Once you've released the clips, carefully separate the iPod's plastic front from the aluminum back. The battery may be glued to the back case. In this instance, you must use the flathead screwdriver to remove it.



### Step 4

The battery is connected to the motherboard by a clamp. To release it you will need to place the screw driver under the brown portion of the clamp and pry it up. Remove the old battery and insert the new one into the clamp. Place the battery back into the proper position and snap the front and back case together

Your new battery will need a minimum of three hours charge time before its first use.

iPod® is a trademark of Apple Computer Inc.